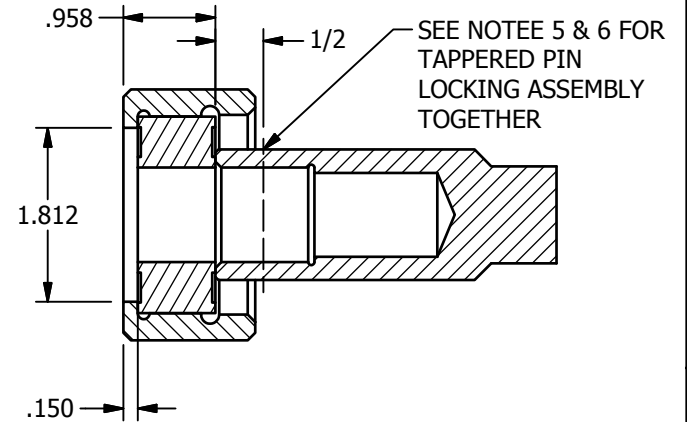
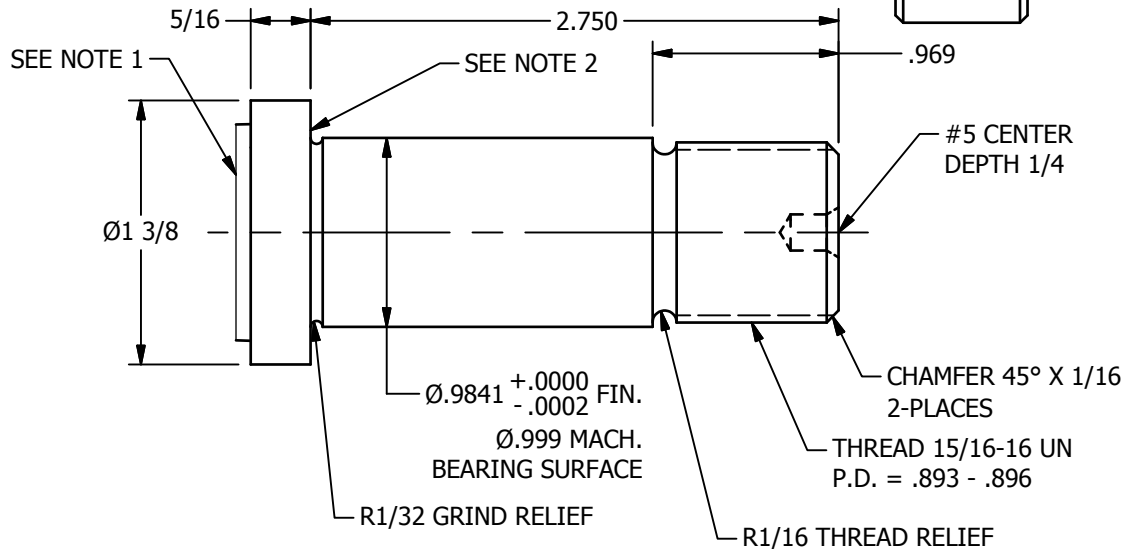
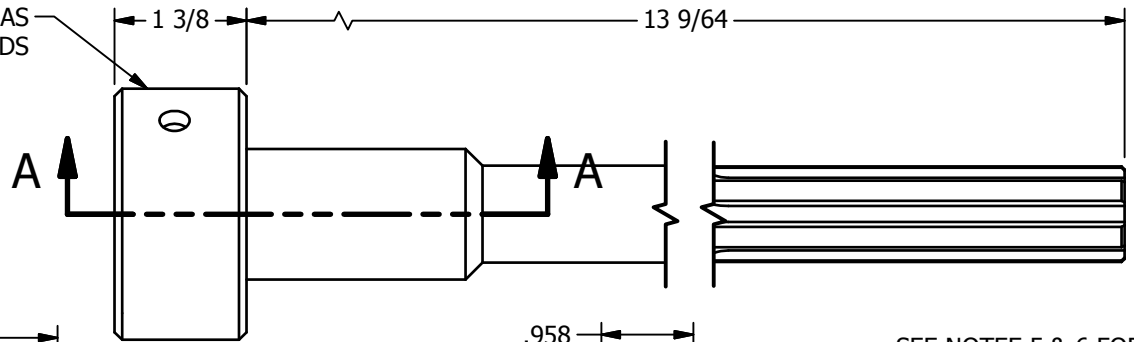


BEARING RETAINER HAS LEFT HAND THREADS



**SECTION A-A  
SCALE 1/2**

**MALE PORTION OF SPINDLE  
W/STANDARD BEARING**

**NOTES:**

- 1) DESIGN CUSTOM SPINDLE FRONT TO CUSTOMER SPECIFICATION.
- 2) SHOULDER MUST BE 90° TO BEARING SURFACE WITHIN 0°1'16" (.021°).
- 3) WHERE TWO DIMENSIONS ARE GIVEN, MACH. DENOTES ROUGH MACHINING CONDITION PRIOR GRINDING, AND FIN. DENOTES FINAL CONDITION AFTER GRINDING.
- 4) BREAK EDGES 1/32 UNLESS OTHERWISE STATED.
- 5) ASSEMBLE SPINDLE AND DRIVE SHAFT USING ANTI-SIEZE LUBRICATION.
- 6) DRILL Ø5/16, THROUGH ASSEMBLY. TAPER REAM #6. AFTER DRIVING IN TAPER PIN, LATHE SURFACE SMOOTH. MARK PIN REMOVAL SIDE WITH X-X.



**AAA PRODUCTS INTERNATIONAL**  
 7114 Harry Hines Blvd  
 Dallas, TX 75235

TITLE: **DRIVE SHAFT & SPINDLE ASSEMBLY,  
 CUSTOMER SUPPLIED SPINDLE,  
 JIFFY DRILL**

DRAWING NO.:

**DIM\_3DS0**