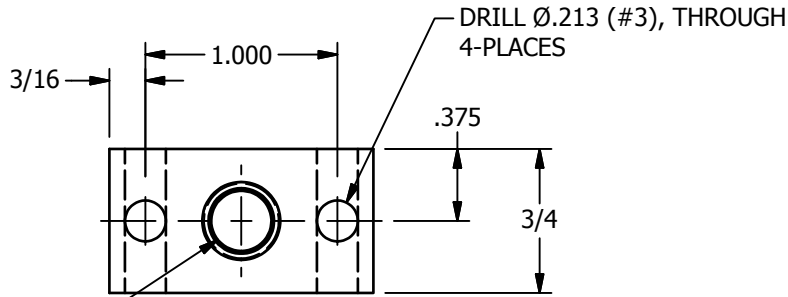
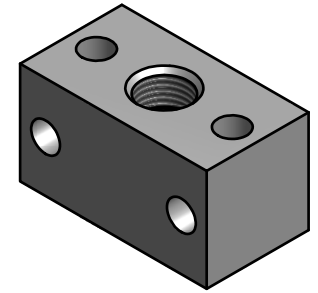
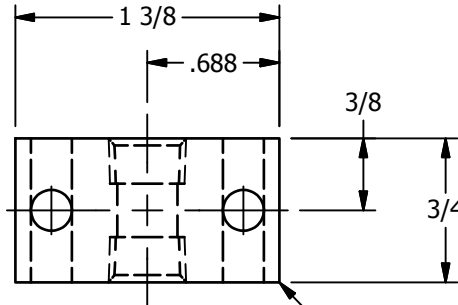


2

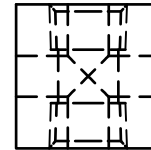
1



DRILL Ø.332 (Q), THROUGH
C'SINK 82°xØ13/32
TAP 1/8-27 NPTF
TOP AND BOTTOM
SEE NOTE 1




BREAK ALL SHARP
CORNERS 45°x1/32



NOTES:

- 1) 1/8" NPTF SPECIFICATIONS
TO SECOND NOTCH ON THREAD GAUGE WHEN USING SHORT PROJECTION (.209) TAP
TO FIRST NOTCH ON THREAD GAUGE WHEN USING STANDARD TAP.

MATERIAL: 6061-T6 OR 2024-T4 ALUMINUM		 AAA PRODUCTS INTERNATIONAL 7114 Harry Hines Blvd Dallas, TX 75235	
LIMITS ON DIMENSIONS UNLESS OTHERWISE SPECIFIED	2-PL DECIMAL ± .01 3-PL DECIMAL ± .005 FRACTIONAL ± 1/64 ANGULAR ± 1/2°	DRAWN: RMcKenna	DATE: 10/25/1994
SCALE: 1 : 1		CHECKED: KWait	DATE: 3/28/2012
SHEET: 1 OF 1		RELEASED: HWomack	DATE: 3/28/2012
TITLE: BUTTON BLEEDER - MOUNT, 1/8" NPTF		PART NO.: TB-1/8	REV.: F

NO.	DATE	REVISION
F	4/10/00	REVISED TAP NOTE TO REMOVE TAPER REAM. CHANGED TAP DRILL FROM 21/64 DIA.
F	10/25/94	REDRAWN AND CONV TO CAD

2

4