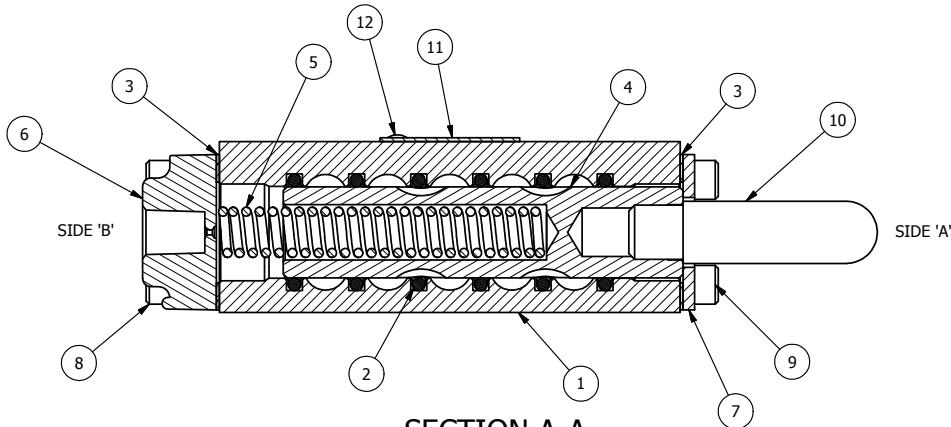


POSITION GASKET ON END OF VALVE SO MOUNTING HOLES ALIGN, BOTH ENDS (SIDE 'A' SHOWN)



SECTION A-A
SCALE 1 : 1
VIEW FROM 3 PORT SIDE

NOTES:

1) ALWAYS GIVE VALVE MODEL AND PART NUMBER WHEN ORDERING PARTS.

DOW-55 GREASE
GREEN O-RINGS

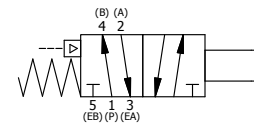
FLG	QTY	PART NO	DESCRIPTION
12	2	V-212	SCREW, #2 X 3/16 DRIVE, TYPE U, OVAL HEAD, 316 STAINLESS STEEL
11	1	AN-114	NAME PLATE, BLANK, FOR VALVES WITH SPRINGS OR DETENTS.
10	1	PBS3-10	STUD - SPECIAL, 1/4" & 3/8" VALVE
9	4	V-37	SCREW, 10-24 X 1/2 SHCS, FOR 1/8" STEEL END CAPS
8	4	V-38	SCREW, 10-24 X 3/4 SHCS, FOR 3/8" CAST END CAP
7	1	SEC3-5	END CAP, STUD, STEEL, ZINC PLTD, 1/4" & 3/8" VALVE
6	1	PEC3	END CAP, PILOT, 380 AL, 1/4" & 3/8" VALVE
5	1	CS3-4	SPRING - RETURN, (PO), 1/4" & 3/8" VALVES
4	1	S3	SPOOL - STANDARD, 2 POS, CLSD CTR, 1/4" & 3/8" VALVE
3	2	ECG3	GASKET - END CAP, 1/4" & 3/8" VALVE
2	6	V-39	O-RING, STD BODY, VITON, 1/4" & 3/8" VALVES
1	1	B2-2E	BODY - SOLID, PLAIN, NO PILOTS, ANODIZED, 1/4" SIDE PORT VALVE

LIMITS ON DIMENSIONS
UNLESS OTHERWISE SPECIFIED
2-PL DECIMAL ± .01
3-PL DECIMAL ± .005
FRACTIONAL ± 1/64
ANGULAR ± 1/2°



DRAWN: RMckenna DATE: 6/1/2010 CHECKED: KWaite DATE: 1/9/2013
SCALE: 1 : 1 SHEET: 1 OF 1 RELEASED: HWomack DATE: 1/9/2013

TITLE: 1/4" SIDE PORT, STUD, 2 POS, SPRING RTRN, PILOT ASSIST RTRN, (8787165)	PART NO.: 633V	REV.: A
--	-------------------	------------



A	NO.	DATE	REVISION
	1	1/8/2013	CHANGED BG3 GASKET TO ECG3.

THE INFORMATION CONTAINED WITHIN THIS DOCUMENT IS PROPRIETARY TO AAA PRODUCTS AND MAY NOT BE DISCLOSED WITHOUT PRIOR WRITTEN CONSENT

P:\Engineering\Inventory Files\Internal Drawings\Valves Assembly\Part\Special\633V.dwg