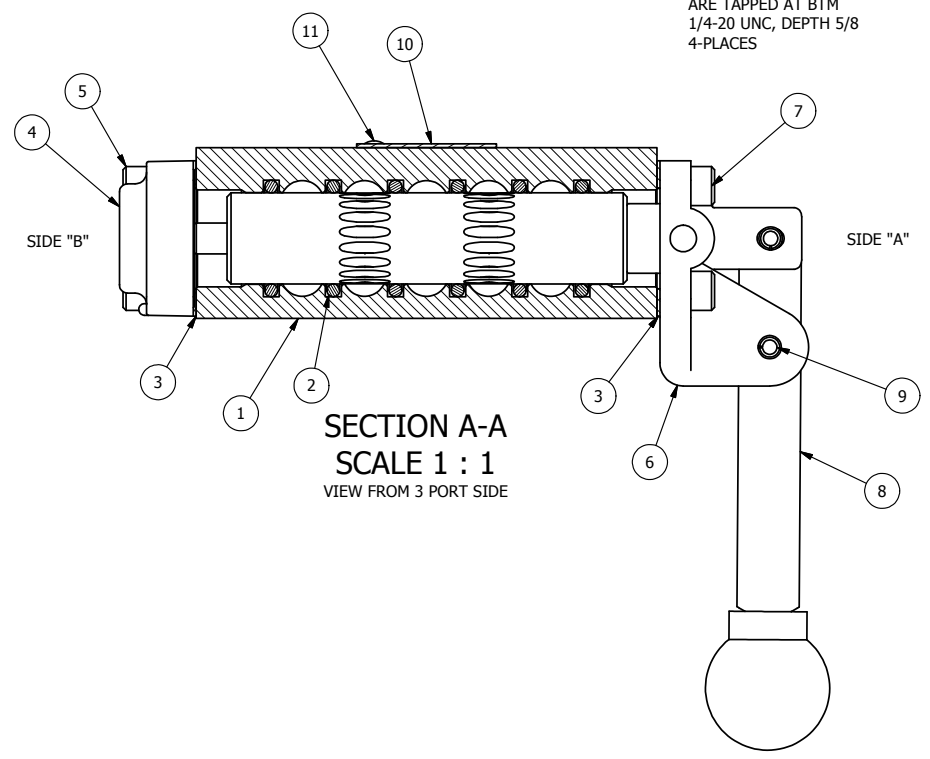


POSITION GASKET ON END OF VALVE SO  
MOUNTING HOLES ALIGN BOTH ENDS

**GREEN GREASE  
GREEN O-RINGS**

- NOTES:  
1) ALWAYS GIVE VALVE MODEL, AND PART NUMBER WHEN ORDERING PARTS.  
2) MOUNTING HOLES ARE TAPPED 1/4-20 UNC, THROUGH, 4-PLACES.



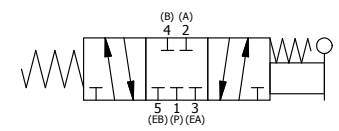
| FLG | QTY | PART NO  | DESCRIPTION   |
|-----|-----|----------|---|
| 11  | 2   | V-212    | SCREW, #2 X 3/16 DRIVE, TYPE U, OVAL HEAD, 316 STAINLESS STEEL          |
| 10  | 1   | AN-114   | NAME PLATE, BLANK, FOR VALVES WITH SPRINGS OR DETENTS.                  |
| 9   | 1   | V-48     | PIN, ROLL 3/16 X 9/16 ZINC PLATED STEEL FOR 1/4 HAND & FOOT CLEVIS      |
| 8   | 1   | HL3-24   | HAND LEVER WITH KNOB, 1/4" & 3/8" VALVE                                 |
| 7   | 4   | V-162    | SCREW, 10-24 X 5/8 SHCS CAP R2H VALVE & JIFFY WIPER                     |
| 6   | 1   | HE3-5    | END CAP, LEVER, 303 STAINLESS, 1/4" & 3/8" VALVE                        |
| 5   | 4   | V-38     | SCREW, 10-24 X 3/4 SHCS, FOR 3/8" CAST END CAP                          |
| 4   | 1   | AY-HY3   | ASSY - SPR CTR, CLSD CTR SPL, LEVER OR TREADLE, 1/4 & 3/8 VALVES        |
| 3   | 2   | ECG3     | GASKET - END CAP, 1/4" & 3/8" VALVE                                     |
| 2   | 6   | V-39     | O-RING, STD BODY, VITON, 1/4" & 3/8" VALVES                             |
| 1   | 1   | B2-2E-TM | BODY - SOLID, PLAIN, NO PILOTS, 1/4-20 MNTG HOLES, 1/4" SIDE PORT VALVE |

LIMITS ON DIMENSIONS  
UNLESS OTHERWISE SPECIFIED  
2-PL DECIMAL ± .01  
3-PL DECIMAL ± .005  
FRACTIONAL ± 1/64  
ANGULAR ± 1/2°

**AAA PRODUCTS INTERNATIONAL**  
7114 Harry Hines Blvd  
Dallas, TX 75235

DRAWN: RMckenna      DATE: 6/2/2010      CHECKED: KWaite      DATE: 1/9/2013  
SCALE: 1 : 1      SHEET: 1 OF 1      RELEASED: HWomack      DATE: 1/9/2013

TITLE: 1/4" SIDE PORT, LEVER, 3 POS, SPR CTR, LVR SHFT, CLSD CTR SPL, 180D LEVER, SHORT ROBO (8185586)      PART NO.: 636VY      REV.:



THE INFORMATION CONTAINED WITHIN THIS DOCUMENT IS PROPRIETARY TO AAA PRODUCTS AND MAY NOT BE DISCLOSED WITHOUT PRIOR WRITTEN CONSENT

P:\Engineering\Inventory Files\Internal Drawings\Valves Assembly\Lever\Special\636VY.dwg